



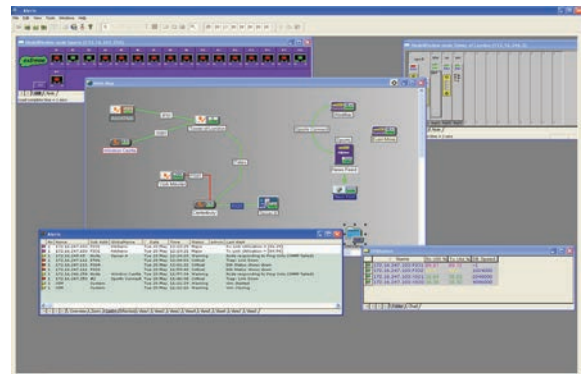
## Features

- MS Access/SQL Server or Oracle database
- Remote workstations
- Alert manager with e-mail, export, launch, print, sounds, time filters, custom pages
- Configuration collector/archive
- User folder configuration
- Integrated MIB table viewer
- Port and CPU utilisation display
- ISDN connection monitoring
- Integrated Telnet terminal emulation with file transfer and macros
- Multi-level map and folder hierarchy
- Transparent GIF icons
- Customer user views via logon
- Folders display data as alphanumeric or charts
- Integrated Multi-Ping, DOS Ping, TFTP, Trace route, Telnet, MIB Table Viewer

# MegaWATCH

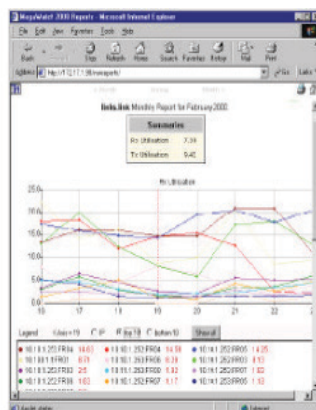
## Datasheet

The Ultra Electronics AEP MegaWATCH is a windows based SNMP Network Management application that allows customers to monitor their network and gather useful information about the condition and status of any AEP or non AEP component deployed.



MegaWATCH is an extremely powerful tool that creates network maps (these are graphical views of the network and configuration). MegaWATCH will regularly poll each piece of equipment in the network and provide a status on each element, right down to the port level.

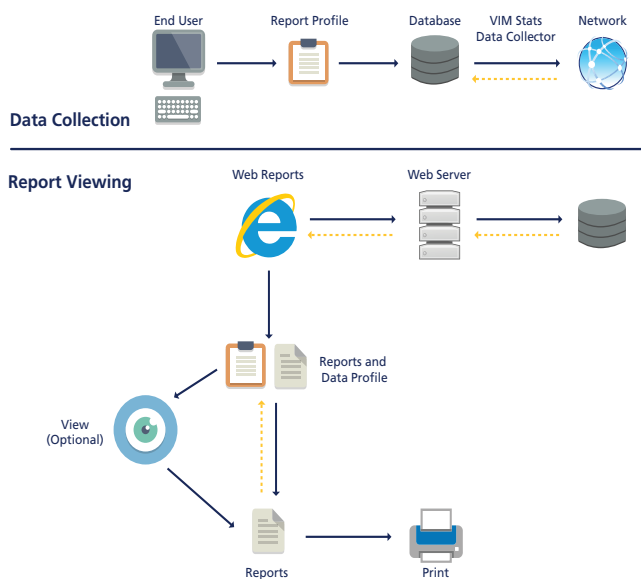
MegaWATCH is based on client server architecture and can be deployed as a standalone system or distributed across a number of workstations communicating with as server. Server databases can be supported on Windows or Unix operating systems. MegaWATCH also supports a 'manager of managers' function where a number of servers need to be deployed for managing large networks. Large networks typically require complex configurations and as they expand become increasingly dependant on the ability to easily manage these while maintaining the flexibility of adequate processing power.



## Enterprise Reports

Enterprise Reports produces highest quality network reports in a flexible format, and at a fraction of the cost of alternative offerings.

- One-off charge – no additional fees to add new network devices or create new reports.
- Based on Crystal Reports and Chart FX.
- May be run from Windows Scheduler for automatic report generation, with e-mail direct to the desktop.
- Output in HTML, PDF, RTF, MHT (web archive) formats. Print and e-mail.
- Mix of text and chart types. Ordering by name or parameter value. Optionally display device name, and or IP address.
- Configurable logos, report header and footer, column headings.
- Threshold charts show the percentage of time a monitored value was over five user-defined thresholds levels.
- Thermo-charts highlight 'hotspots' at a glance.
- Create time-window views onto the report data.



## Web Reports

Web Reports module enables viewing of network reports from a Web Browser, using a Web Server in a MegaWATCH system.

- One-off charge – no additional fees to add new network devices or create new reports.
- Password control allows different users to see only their own reports.
- Calendar function shows days for which data is available.
- Day, Week, Month, Quarter views with drill down.
- Chart entries can be ordered by IP address, Name or best worst performers.
- Click network object to highlight others in the chart.
- Create additional reports (views) on a sub-set of the network objects selected from the main report

## Minimum system requirements

### MegaWATCH Server

- Pentium Processor 256Mhz with 1Ghz memory.
- 2.5 GByte Hard Drive and CD ROM Drive.
- Graphics capability: 1024 x 768 x 64k colours.
- Database - Microsoft Accessor Microsoft SQL Server.
- Windows 2000, 2003 or XP.
- Ethernet LAN Adapter
- Optional sound card

### MegaWATCH Workstation

- Pentium Processor 256Mhz with 1Ghz memory.
- 1.7 GByte Hard Drive and CD ROM Drive.
- Graphics capability: 1024 x 768 x 64k colours.
- Windows 2000, 2003 or XP.
- Ethernet LAN Adapter
- Optional sound card

## Megawatch Systems

Product	Ordering Part Number
5 nodes	MWATCH-5
20 nodes	MWATCH-20
50 nodes	MWATCH-50
100 nodes	MWATCH-100
250 nodes	MWATCH-250
250+nodes	MWATCH-250+



### Ultra Electronics

AEP  
 Knaves Beech Business Centre  
 Loudwater  
 High Wycombe  
 Buckinghamshire, HP10 9UT  
 Main Switchboard: +44 (0)1628 642 600  
 Email: information@ultra-aep.com  
 www.ultra-aep.com  
 www.ultra-electronics.com